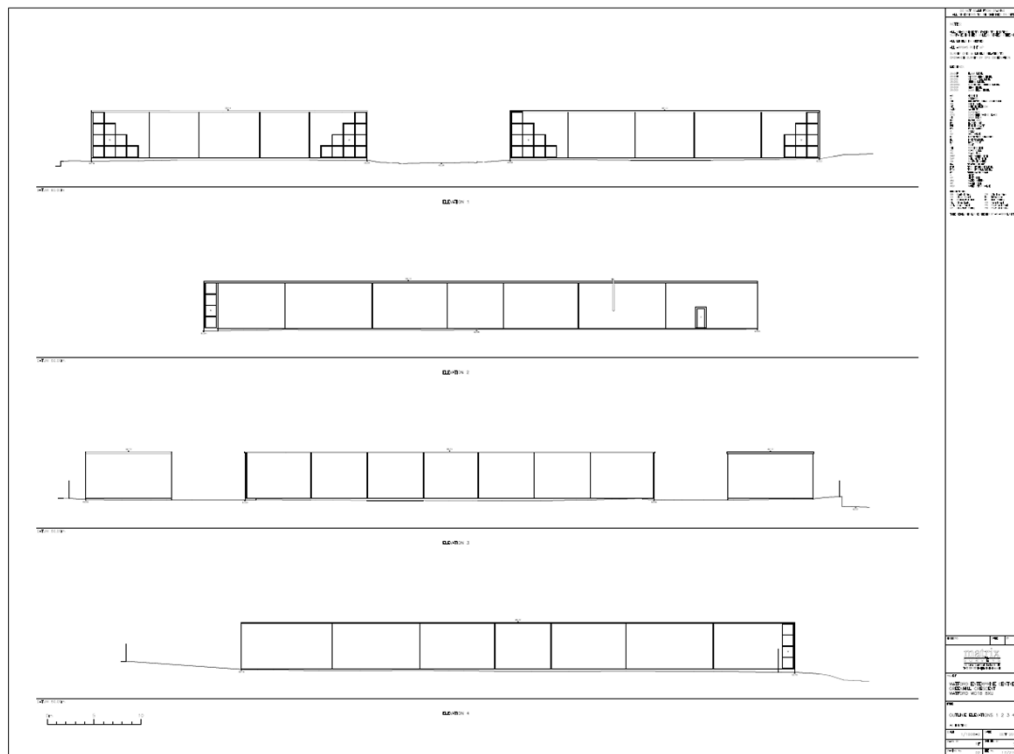


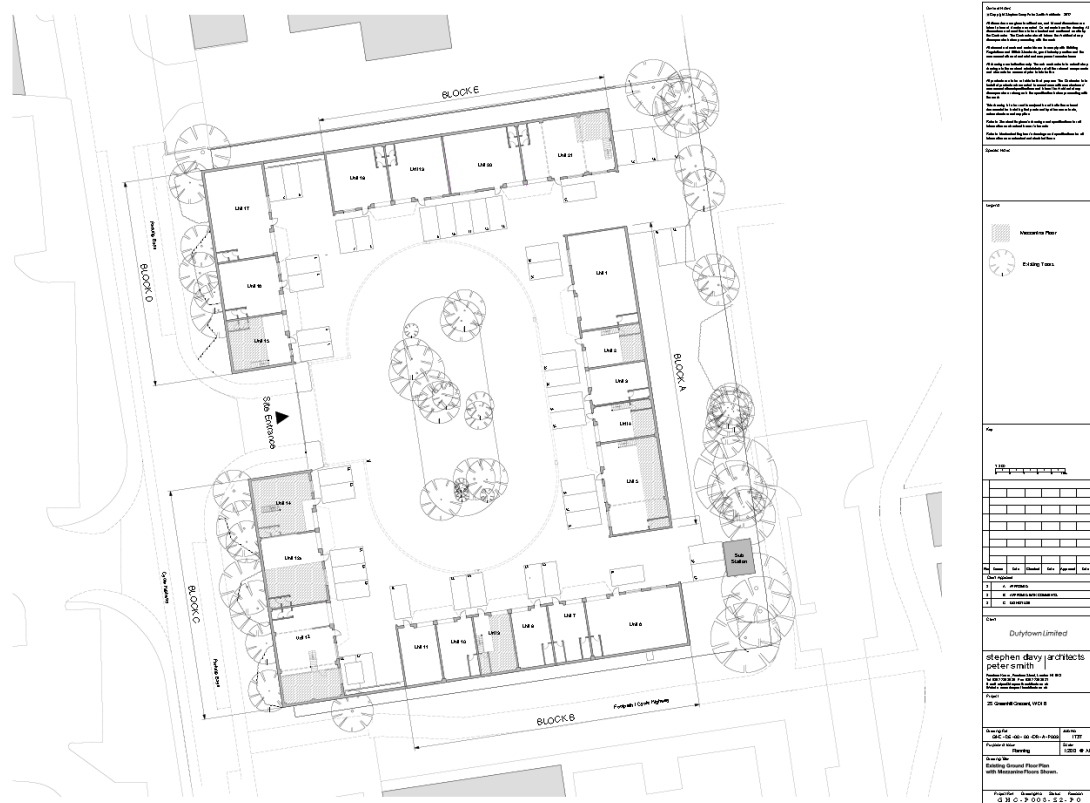
Existing elevations 1-4



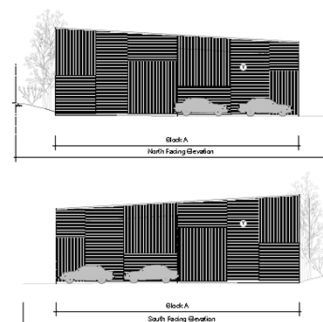
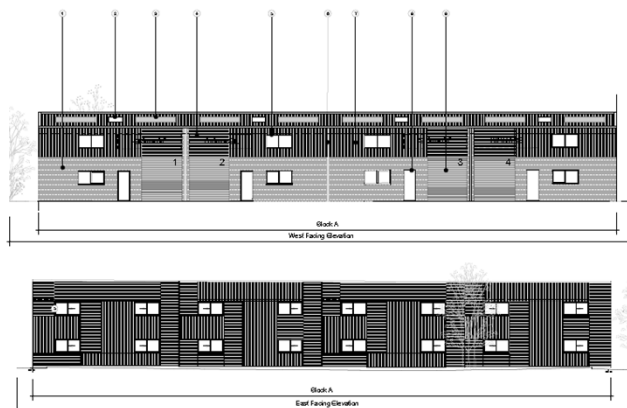
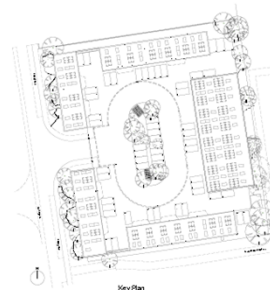
Existing elevations 5-8



Existing ground floor plan



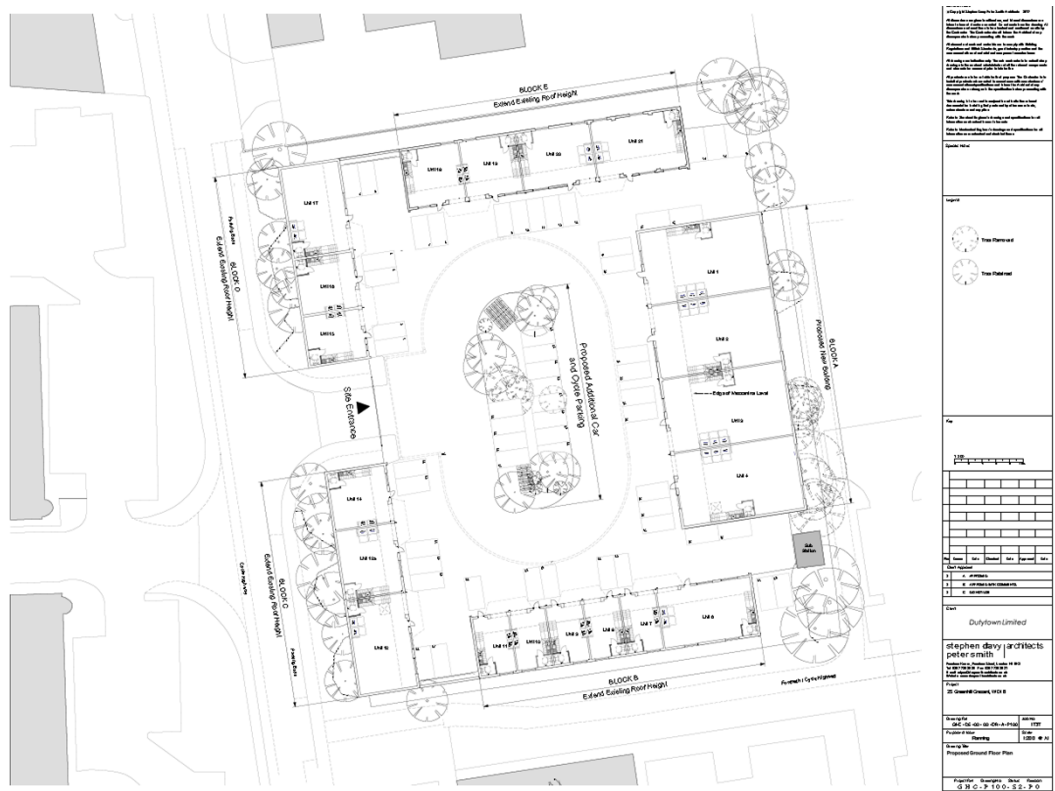
Proposed Block A elevations



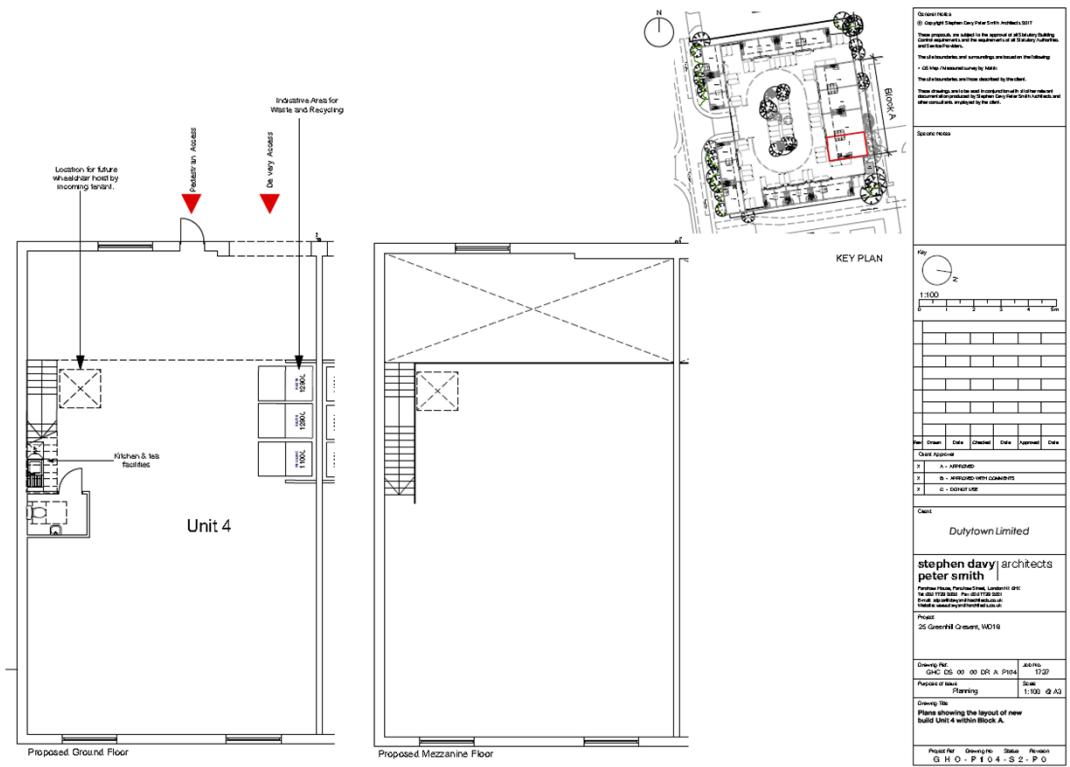
<p>1. CLIENT 1.1 NAME 1.2 ADDRESS 1.3 CONTACT PERSON 1.4 PHONE 1.5 EMAIL 1.6 WEBSITE 1.7 INDUSTRY 1.8 COMPANY TYPE 1.9 INDUSTRY TYPE 1.10 INDUSTRY TYPE 1.11 INDUSTRY TYPE 1.12 INDUSTRY TYPE 1.13 INDUSTRY TYPE 1.14 INDUSTRY TYPE 1.15 INDUSTRY TYPE 1.16 INDUSTRY TYPE 1.17 INDUSTRY TYPE 1.18 INDUSTRY TYPE 1.19 INDUSTRY TYPE 1.20 INDUSTRY TYPE 1.21 INDUSTRY TYPE 1.22 INDUSTRY TYPE 1.23 INDUSTRY TYPE 1.24 INDUSTRY TYPE 1.25 INDUSTRY TYPE 1.26 INDUSTRY TYPE 1.27 INDUSTRY TYPE 1.28 INDUSTRY TYPE 1.29 INDUSTRY TYPE 1.30 INDUSTRY TYPE 1.31 INDUSTRY TYPE 1.32 INDUSTRY TYPE 1.33 INDUSTRY TYPE 1.34 INDUSTRY TYPE 1.35 INDUSTRY TYPE 1.36 INDUSTRY TYPE 1.37 INDUSTRY TYPE 1.38 INDUSTRY TYPE 1.39 INDUSTRY TYPE 1.40 INDUSTRY TYPE 1.41 INDUSTRY TYPE 1.42 INDUSTRY TYPE 1.43 INDUSTRY TYPE 1.44 INDUSTRY TYPE 1.45 INDUSTRY TYPE 1.46 INDUSTRY TYPE 1.47 INDUSTRY TYPE 1.48 INDUSTRY TYPE 1.49 INDUSTRY TYPE 1.50 INDUSTRY TYPE 1.51 INDUSTRY TYPE 1.52 INDUSTRY TYPE 1.53 INDUSTRY TYPE 1.54 INDUSTRY TYPE 1.55 INDUSTRY TYPE 1.56 INDUSTRY TYPE 1.57 INDUSTRY TYPE 1.58 INDUSTRY TYPE 1.59 INDUSTRY TYPE 1.60 INDUSTRY TYPE 1.61 INDUSTRY TYPE 1.62 INDUSTRY TYPE 1.63 INDUSTRY TYPE 1.64 INDUSTRY TYPE 1.65 INDUSTRY TYPE 1.66 INDUSTRY TYPE 1.67 INDUSTRY TYPE 1.68 INDUSTRY TYPE 1.69 INDUSTRY TYPE 1.70 INDUSTRY TYPE 1.71 INDUSTRY TYPE 1.72 INDUSTRY TYPE 1.73 INDUSTRY TYPE 1.74 INDUSTRY TYPE 1.75 INDUSTRY TYPE 1.76 INDUSTRY TYPE 1.77 INDUSTRY TYPE 1.78 INDUSTRY TYPE 1.79 INDUSTRY TYPE 1.80 INDUSTRY TYPE 1.81 INDUSTRY TYPE 1.82 INDUSTRY TYPE 1.83 INDUSTRY TYPE 1.84 INDUSTRY TYPE 1.85 INDUSTRY TYPE 1.86 INDUSTRY TYPE 1.87 INDUSTRY TYPE 1.88 INDUSTRY TYPE 1.89 INDUSTRY TYPE 1.90 INDUSTRY TYPE 1.91 INDUSTRY TYPE 1.92 INDUSTRY TYPE 1.93 INDUSTRY TYPE 1.94 INDUSTRY TYPE 1.95 INDUSTRY TYPE 1.96 INDUSTRY TYPE 1.97 INDUSTRY TYPE 1.98 INDUSTRY TYPE 1.99 INDUSTRY TYPE 2. PROJECT 2.1 NAME 2.2 ADDRESS 2.3 CONTACT PERSON 2.4 PHONE 2.5 EMAIL 2.6 WEBSITE 2.7 INDUSTRY 2.8 COMPANY TYPE 2.9 INDUSTRY TYPE 2.10 INDUSTRY TYPE 2.11 INDUSTRY TYPE 2.12 INDUSTRY TYPE 2.13 INDUSTRY TYPE 2.14 INDUSTRY TYPE 2.15 INDUSTRY TYPE 2.16 INDUSTRY TYPE 2.17 INDUSTRY TYPE 2.18 INDUSTRY TYPE 2.19 INDUSTRY TYPE 2.20 INDUSTRY TYPE 2.21 INDUSTRY TYPE 2.22 INDUSTRY TYPE 2.23 INDUSTRY TYPE 2.24 INDUSTRY TYPE 2.25 INDUSTRY TYPE 2.26 INDUSTRY TYPE 2.27 INDUSTRY TYPE 2.28 INDUSTRY TYPE 2.29 INDUSTRY TYPE 2.30 INDUSTRY TYPE 2.31 INDUSTRY TYPE 2.32 INDUSTRY TYPE 2.33 INDUSTRY TYPE 2.34 INDUSTRY TYPE 2.35 INDUSTRY TYPE 2.36 INDUSTRY TYPE 2.37 INDUSTRY TYPE 2.38 INDUSTRY TYPE 2.39 INDUSTRY TYPE 2.40 INDUSTRY TYPE 2.41 INDUSTRY TYPE 2.42 INDUSTRY TYPE 2.43 INDUSTRY TYPE 2.44 INDUSTRY TYPE 2.45 INDUSTRY TYPE 2.46 INDUSTRY TYPE 2.47 INDUSTRY TYPE 2.48 INDUSTRY TYPE 2.49 INDUSTRY TYPE 2.50 INDUSTRY TYPE 2.51 INDUSTRY TYPE 2.52 INDUSTRY TYPE 2.53 INDUSTRY TYPE 2.54 INDUSTRY TYPE 2.55 INDUSTRY TYPE 2.56 INDUSTRY TYPE 2.57 INDUSTRY TYPE 2.58 INDUSTRY TYPE 2.59 INDUSTRY TYPE 2.60 INDUSTRY TYPE 2.61 INDUSTRY TYPE 2.62 INDUSTRY TYPE 2.63 INDUSTRY TYPE 2.64 INDUSTRY TYPE 2.65 INDUSTRY TYPE 2.66 INDUSTRY TYPE 2.67 INDUSTRY TYPE 2.68 INDUSTRY TYPE 2.69 INDUSTRY TYPE 2.70 INDUSTRY TYPE 2.71 INDUSTRY TYPE 2.72 INDUSTRY TYPE 2.73 INDUSTRY TYPE 2.74 INDUSTRY TYPE 2.75 INDUSTRY TYPE 2.76 INDUSTRY TYPE 2.77 INDUSTRY TYPE 2.78 INDUSTRY TYPE 2.79 INDUSTRY TYPE 2.80 INDUSTRY TYPE 2.81 INDUSTRY TYPE 2.82 INDUSTRY TYPE 2.83 INDUSTRY TYPE 2.84 INDUSTRY TYPE 2.85 INDUSTRY TYPE 2.86 INDUSTRY TYPE 2.87 INDUSTRY TYPE 2.88 INDUSTRY TYPE 2.89 INDUSTRY TYPE 2.90 INDUSTRY TYPE 2.91 INDUSTRY TYPE 2.92 INDUSTRY TYPE 2.93 INDUSTRY TYPE 2.94 INDUSTRY TYPE 2.95 INDUSTRY TYPE 2.96 INDUSTRY TYPE 2.97 INDUSTRY TYPE 2.98 INDUSTRY TYPE 2.99 INDUSTRY TYPE 3. DESCRIPTION 3.1 NAME 3.2 ADDRESS 3.3 CONTACT PERSON 3.4 PHONE 3.5 EMAIL 3.6 WEBSITE 3.7 INDUSTRY 3.8 COMPANY TYPE 3.9 INDUSTRY TYPE 3.</p>

The architectural drawings show four elevations of a building facade. Elevation 1 is a long facade with multiple window units and a central entrance area labeled "Entrance Road". Elevation 2 shows a similar facade with a "Boundary Wall" and "Sub Station" indicated. Elevation 3 shows a facade with a "Boundary Wall" and "Sub Station" indicated. Elevation 4 shows a facade with a "Boundary Wall" and "Sub Station" indicated. The drawings include labels for "Block A", "Block B", "Block C", and "Block D". A scale bar indicates 0m to 10m.

Proposed ground floor plan



Proposed Layout detail



Architectural floor plan of a multi-story building complex. The plan shows several interconnected rectangular blocks, some labeled 'BLOCK A' and 'BLOCK B'. Units are numbered, including 1001, 1002, 1003, 1004, 1005, 1006, 1007, 1008, 1009, 1010, 1011, 1012, 1013, 1014, 1015, 1016, 1017, 1018, 1019, 1020, 1021, 1022, 1023, 1024, 1025, 1026, 1027, 1028, 1029, 1030, 1031, 1032, 1033, 1034, 1035, 1036, 1037, 1038, 1039, 1040, 1041, 1042, 1043, 1044, 1045, 1046, 1047, 1048, 1049, 1050, 1051, 1052, 1053, 1054, 1055, 1056, 1057, 1058, 1059, 1060, 1061, 1062, 1063, 1064, 1065, 1066, 1067, 1068, 1069, 1070, 1071, 1072, 1073, 1074, 1075, 1076, 1077, 1078, 1079, 1080, 1081, 1082, 1083, 1084, 1085, 1086, 1087, 1088, 1089, 1090, 1091, 1092, 1093, 1094, 1095, 1096, 1097, 1098, 1099, 1100. The plan includes a central courtyard area with landscaping, including trees and a small building. Dimensions are provided for various sections, such as 'BLOCK A External Elevation Height' and 'BLOCK B External Elevation Height'. A scale bar is located at the bottom left. The plan is oriented with North at the top.

21-23 Aika House

26

25

Greenhill Crescent

27

Cable View